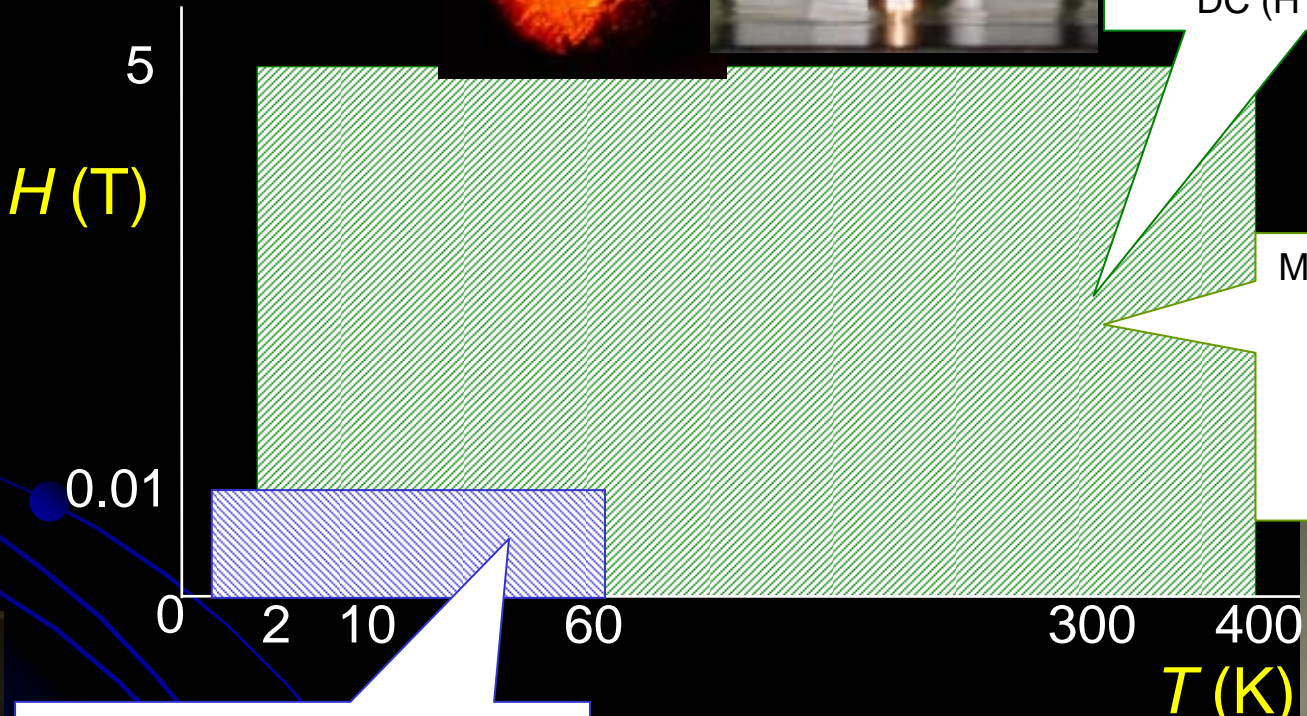


Experimental environment

8.5mm



Quantum Design SQUID magnetometer MPMS +miniature DAC
 $1.8 \leq T \leq 400$ K
 $H \leq 5$ T
 $P \leq 30$ GPa
DC ($H < 1$ T) & AC



MPMS +CuBe piston cylinder cell
 $1.8 \leq T \leq 400$ K
 $H \leq 5$ Tesla
 $P \leq 1.6$ GPa
DC & AC

^3He -cryostat + SQUID + DAC
 $0.7 \leq T \leq 60$ K
 $5 \times 10^{-5} \leq H \leq 1 \times 10^{-2}$ T
 $P \leq 30$ GPa
DC, VCM, AC

